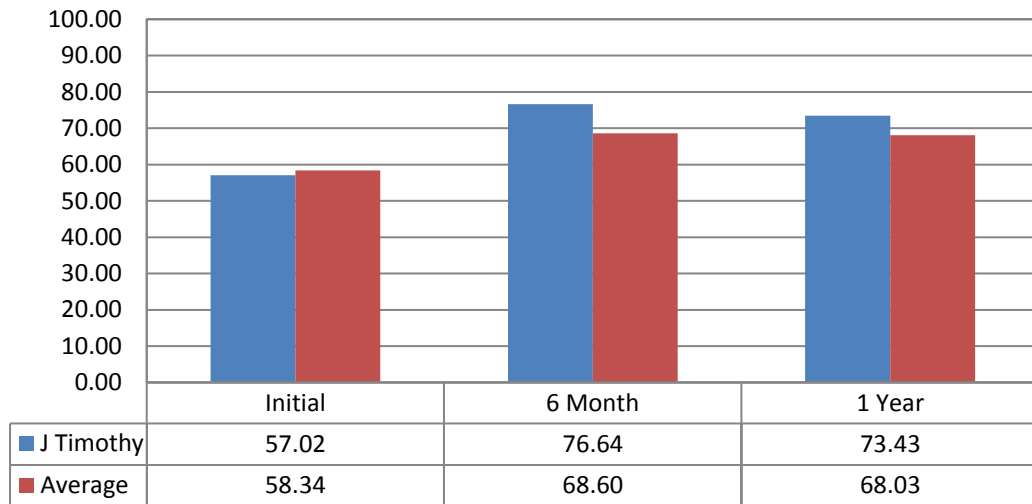
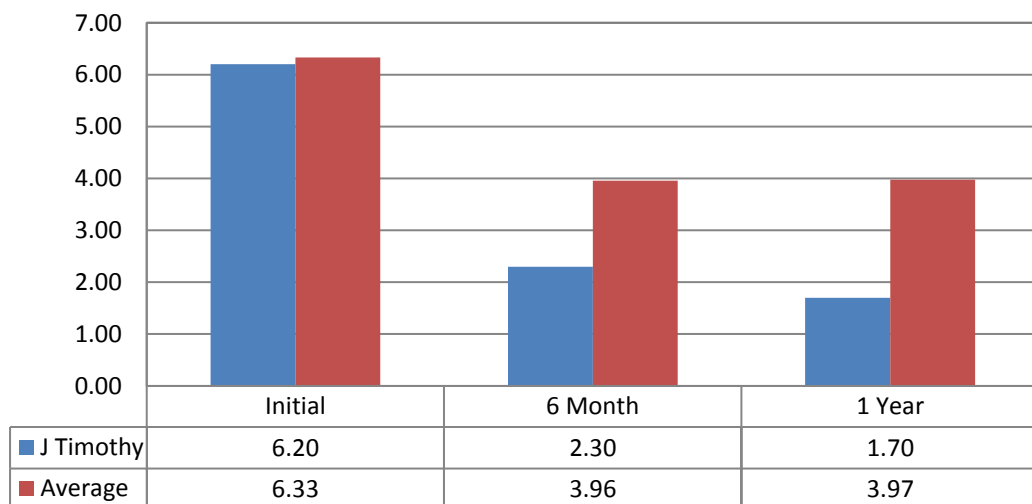


### EQ5D VAS



### Back Pain VAS



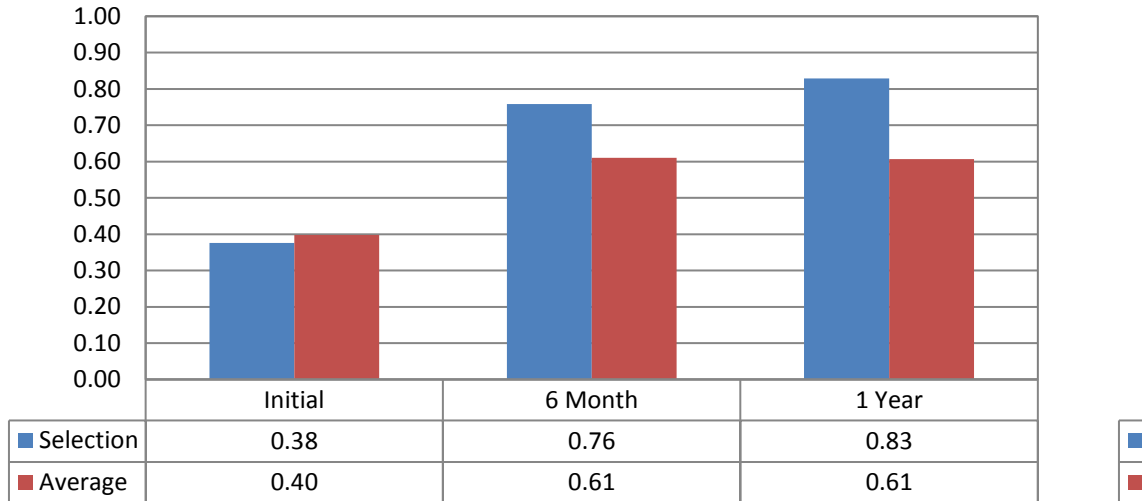
EQ5D is an overall health measure. The table shows the reduction in disability and back pain in my patients compared to the national average of patients put on the British Spinal Registry.

# Outcome Measures

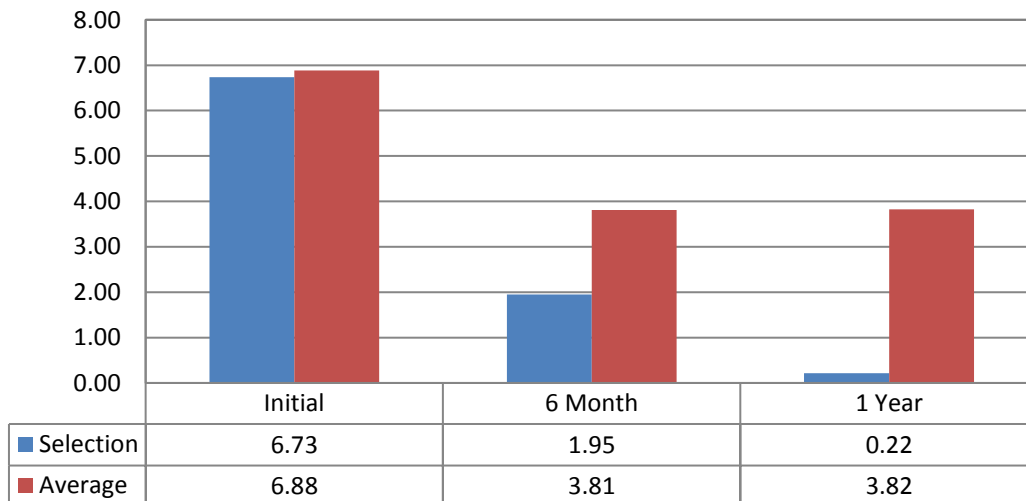
The 'Average' figures denote National Averages for all patients

Date Average Generated = 13/04/2017

## EQ5D Index



## Leg Pain Worst VAS



Sciatica is significantly reduced over one year in my patients compared to the national average.

## Oswestry Disability Index

